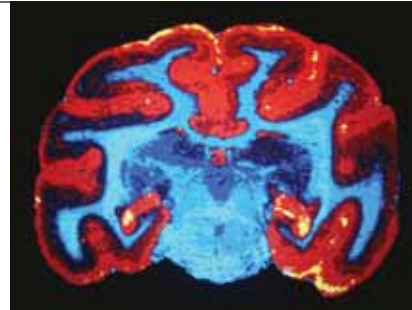
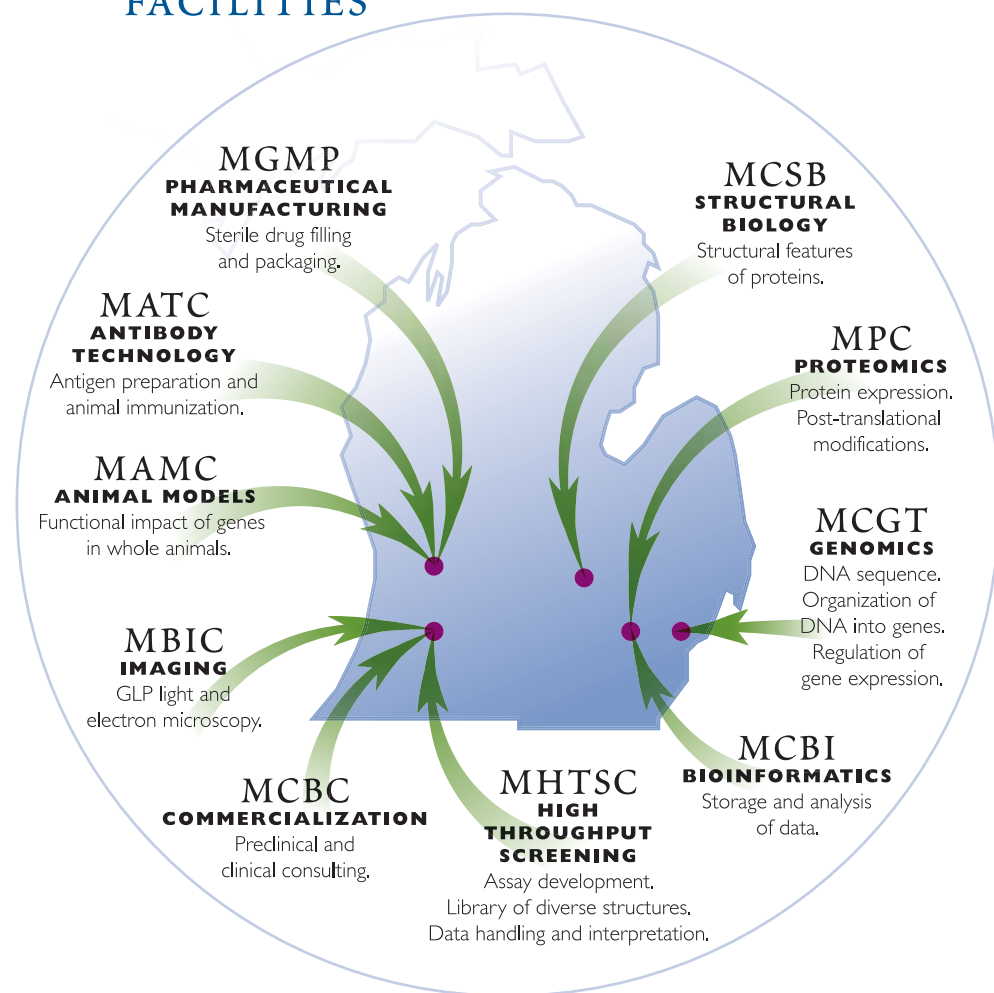


MICHIGAN CORE TECHNOLOGY ALLIANCE



INFRASTRUCTURE FACILITIES



The Michigan Core Technology Alliance (CTA) is a collaborative network of advanced technology facilities developed for use by researchers affiliated with universities, private research institutes, and biotechnology or pharmaceutical firms in the State of Michigan and elsewhere. Services offered by the core facilities as described in this brochure are available globally to life sciences researchers on a fee-for-service basis.

These facilities serve as catalysts for development of life sciences, biotechnology research and business development throughout the State of Michigan and elsewhere. They are located at Michigan State University in East Lansing, the University of Michigan in Ann Arbor, Grand Valley State University and the Van Andel Research Institute in Grand Rapids, Wayne State University in Detroit, and Western Michigan University and Kalamazoo Valley Community College in Kalamazoo.

Michigan Public Act 120 of 1999 created the Michigan Health and Aging Research and Development Initiative to build the Michigan Life Sciences Corridor. Start-up funding for the CTA was provided by the Michigan Life Sciences Corridor Initiative, which later became the Technology Tri-Corridor Initiative. Additional funding for the CTA was most recently provided by a grant from the Michigan 21st Century Job Fund.

For more information, please visit the CTA website at www.CTAalliance.org

CTA Board of Directors

George F. Vande Woude
Director
Van Andel Research Institute
CTA President & CEO

J. Ian Gray
Vice President for Research
and Graduate Studies
Michigan State University

Hilary Ratner
Vice President for Research
Wayne State University

Stephen R. Forrest
Vice President for Research
University of Michigan

Cindy Douglas
Vice President
Technology Development
Michigan Economic
Development Corporation

James L. Herbert
President
Neogen, Inc.

James DeHaven
Vice President
Kalamazoo Valley
Community College

Scott A. Young
Technical Leader
Global Analytical Services
The Dow Chemical Company

Leonard C. Ginsberg
Vice President for Research
Western Michigan University

Judy Leopold
Pfizer, Global R&D
Ann Arbor Laboratories

Linda Chamberlain
Executive Director
Grand Valley State University

Contact Information

**Michigan Animal
Models Consortium**
Pamela J. Swiatek, Ph.D.
Pam.Swiatek@vai.org
Van Andel Research Institute
333 Bostwick NE
Grand Rapids, MI 49503
(616) 234-5684
(616) 234-5685 (fax)

**Michigan Center
for Biological Information**
Brian D. Athey, Ph.D.
bleu@umich.edu
University of Michigan
1071 Beal Avenue
Ann Arbor, MI 48109-2103
(734) 615-5916
(734) 936-4919 (fax)

**Michigan Center
for Genomic Technologies**
Susan J. Land, Ph.D.
sland@cmb.biosci.wayne.edu
Wayne State University
5107 Biological Sciences Bldg.
5047 Gullen Mall
Detroit, MI 48202
(313) 577-9605
(313) 577-6200 (fax)

**Michigan Center
for Structural Biology**
Shelagh Ferguson-Miller, Ph.D.
Michigan State University
fergus20@msu.edu
Biochemistry Bldg.
East Lansing MI 48824-1319
(517) 355-0199 (Shelagh)
(517) 353-9334 (fax)

Michigan Proteome Consortium
Philip C. Andrews, Ph.D.
andrewsp@umich.edu
Dept. of Biological Chemistry
University of Michigan
Medical School
1301 Catherine St.
Ann Arbor, MI 48109-0606
(734) 763-3130
(734) 647-0951 (fax)

**Michigan Center for
Bioscience Commercialization**
Jack R. Luderer, M.D.
Executive Director
4717 Campus Drive
Kalamazoo, MI 49008
jack.luderer@wmich.edu
(269) 544-1072
(269) 544-1089
www.wmich.edu/brcc

**Michigan Biological
Imaging Center**
Rob Eversole, Ph.D.
Master Faculty Specialist
rob.eversole@wmich.edu
Dept. of Biological Sciences
3441 Wood Hall
Kalamazoo, MI 49008
(269) 387-5640
(269) 387-5609
<http://homepages.wmich.edu/~eversole/>

**Michigan Good
Manufacturing Practices**
John A. Bacon
Executive Director
John.Bacon@vai.org
Grand River Aseptic
Pharmaceutical Packaging
140 Front Ave SW, Suite 3
Grand Rapids, MI 49503
(616) 644-0555
www.GrandRiverAPP.com

**Michigan High Throughput
Screening Center**
Robert Kilkuskie, Ph.D.
rkilkuskie@kvcc.edu
Kalamazoo Valley
Community College
7107 Elm Valley Drive
Kalamazoo, MI 49009
(269) 353-1582
(269) 353-1299 (fax)
<http://mhtsc.kvcc.edu>

**Michigan Antibody
Technology Core**
Brian Cao, M.D.
brian.cao@vai.org
Van Andel Research Institute
333 Bostwick Avenue NE
Grand Rapids, MI 49503
(616) 234-5342
(616) 234-5343 (fax)
www.vai.org/vari/biography/cao.asp

Core Technology Alliance
John C. Greenfield, Ph.D.
CTA Executive Director
John.Greenfield@vai.org
333 Bostwick NE
Grand Rapids, MI 49503
(616) 234-5516
(616) 234-5312 (fax)

Thomas F. DeKoning
CTA Marketing Manager
Tom.dekoning@vai.org
333 Bostwick NE
Grand Rapids, MI 49503
(616) 234-5520
(616) 234-5521 (fax)

Acknowledgements

Support for this publication was provided by the Offices of the Vice President for Research at the University of Michigan, Michigan State University, Wayne State University, Western Michigan University, and Grand Valley State University; the Office of the Director for the Van Andel Research Institute; and Kalamazoo Valley Community College.

Content and images were provided by the scientific directors and staff of the CTA core facilities:

- Philip Andrews and Luciana Pelosi-Kilby, Michigan Proteome Consortium
- Brian Athey, Paul Trombley, and the staff of the Michigan Center for Biological Information
- Shelagh Ferguson-Miller, Jack Preiss, Michael Garavito and Warren Beck, Michigan Center for Structural Biology
- Pam Swiatek, Michigan Animal Models Core
- Susan Land and Elaine Thomas Weber, Michigan Center for Genomics Technology
- Brian Cao, Michigan Antibody Technology Center
- Robert Kilkuskie, Michigan High Throughput Screening Center
- Special thanks to Robert Stewart, Robert Stewart Photography, Ltd. of Royal Oak, Michigan for the beautiful photograph of the DNA microarrayer.
- Design and layout were provided by Jim Reitz, Michigan Marketing & Design, University of Michigan
- Project coordination was provided by Cynthia Camburn, Michigan Marketing & Design, University of Michigan